



Best Viewed in  
Landscape Mode

# Metal Flasks, Sippers & Mugs

Contains: Vacuum Flasks, Metal bottles, and Mugs

**POWER PLUS**

## PREMIA+ GLASS MUG

WITH SILICON GRIP  
SLIDER LID WITH STRAW SLOT



Silicon sleeve on body to protect  
your hands from burning from  
hot liquid inside

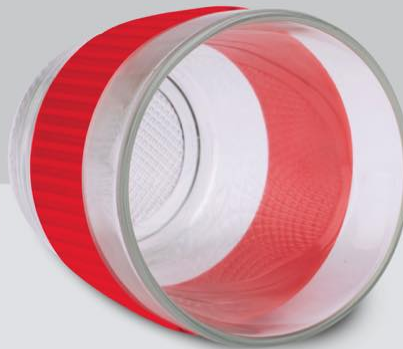
Straw slot in the lid

Slider lid for ease of use

Keeps the contents pure and  
free from contamination

Elegant glass mug with  
silicon sleeve

**POWER PLUS**



**LEAK PROOF**



**BPA FREE**



**NON TOXIC**



Product Code : H 283

Capacity: 350 ml approx.

# OSCAR+

**LARGE INSULATED STAINLESS STEEL  
MUG WITH HANDLE**



Capacity 550 ml approx.

Product Code : H 287

**POWER+  
PLUS**



KEEPS  
HOT / COLD  
FOR  
3-4 HOURS



**ANTI  
RUST**



**DOUBLE  
WALL**



**BPA  
FREE**



**LEAK  
PROOF**

- Comes with a cap to store your drink for later
- Double wall protects your hands from burning by hot liquids inside
- High quality stainless steel double wall mug
- Mirror finish steel inside for longer life



**STRAW  
SLOT IN  
THE LID**

**inside STAINLESS STEEL**

**SLIDER LID FOR EASE OF USE**

**POWER PLUS**

INCLUDES  
**STEEL STRAW**  
WITH  
**THERMO  
INSULATED  
SLEEVE**

Capacity **600 ml.** approx.

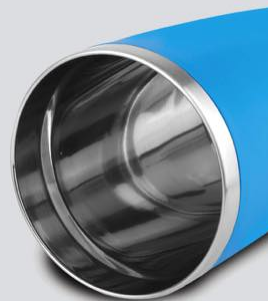
# ROYAL

Product Code : H 267

- Large Double wall Stainless steel mug
- Air- tight lid prevents spillage
- Has a slot to insert straw
- Thermo insulated Soft sleeve to avoid damage to teeth while travelling in case of jerks
- Slider cap to sip and store for later



304  
STEEL



**HOT & COLD  
4-6 HOURS**

**304 GRADE  
STAINLESS STEEL**



**STEEL STRAW  
WITH  
FLEXIBLE  
SILICON  
SLEEVE**

**IS SAFE TO USE  
FOR KIDS,  
OR WHILE  
TRAVELLING**



ANTI  
RUST



DOUBLE  
WALL



LEAK  
PROOF



BPA  
FREE



Capacity **450 ml** Approx.



# PUSH OPEN VACUUM FLASK

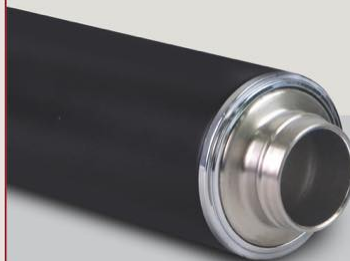
**BUTTON  
LOCK  
PROTECTION**



PUSH UP  
BUTTON  
TO UN-LOCK

PUSH DOWN  
BUTTON  
TO LOCK

PRESS THE BUTTON TO  
OPEN THE CAP



**304 GRADE  
STAINLESS STEEL**

Product Code : H 273

- Double wall stainless steel vacuum insulation
- Rinse with hot/cold water before filling with hot/cold liquid for increased temperature retention



**BPA  
FREE**



**WIDE  
MOUTH**



**DOUBLE  
WALL**



**LEAK  
PROOF**



**KEEPS HOT  
FOR 6-7  
HOURS**



Capacity **550 ml** Approx.



- Travel wide mouth Vacuum Flask with silicon strap
- Double wall stainless steel vacuum insulation
- Rinse with hot/cold water before filling with hot/cold liquid for increased temperature retention



**KEEPS  
HOT  
FOR  
6-7  
HOURS**



**304 GRADE  
STAINLESS STEEL**



**WIDE  
MOUTH**



**DOUBLE  
WALL**



**BPA  
FREE**



**LEAK  
PROOF**

Product Code : H 269

**TRAVEL WIDE MOUTH VACUUM FLASK WITH SILICON STRAP**

# LONG COLA

## STAINLESS STEEL BOTTLE

CAPACITY  
**900ml**  
APPROX.



**LEAK  
PROOF**



**LIGHT  
WEIGHT**



**WIDE  
MOUTH**



**BPA  
FREE**



packing  
in  
White  
Box

Product Code : H 240 A

*Ferrero*

## Stainless Steel Magic Coffee Mug - H 138

Spill Free Design



Made of Stainless  
Steel both inside  
and outside

Easy lift up cap  
to protect the  
drinking vent

Mug doesn't fall off with accidental pushes,  
but can be lifted easily straight up

300 ml.

- Food-safe 304 stainless steel used inside
- Magic suction feature ensures spill free design
- Premium silicon grip on the body for a better grip and a premium feel
- Available in 2 Colours : Black and White



CLICK HERE



TO PLAY VIDEO



# CAMBRIDGE

Magic Stainless steel Mug with 304 steel - H 168  
(Spill free design)

Magic suction  
feature ensures  
spill free design



Mug doesn't fall  
off with accidental  
pushes, but can be  
lifted easily straight  
up with handle

**POWER+<sup>®</sup>**



Handle grip with  
finger marks for  
a better user  
experience

Elegant design,  
made of  
food-safe 304  
stainless  
steel inside



Grade  
**304**  
Steel

CLICK HERE

(470 ml app



TO PLAY VIDEO

POWER **PLUS**

# ECO BREW

## COFFEE FIBER ECO FRIENDLY MUG

Product Code : H 288

Capacity :  
300 ml (approx.)

- Beautiful mug made of Eco friendly Coffee fiber
- Sustainable and responsible choice as lesser plastic gets dumped in landfills
- Large capacity
- Classic design looks like a ceramic mug
- BPA free, food safe material used



Unbreakable



Upcycled



Low CO<sub>2</sub>  
footprint



Uplift farmer



Crop-waste  
used



Microwave Safe



Available  
color  
options



FLIP SPOUT ENABLES  
YOU TO DRINK  
WITH EASE



Capacity - 750ml



EASY  
TO CLEAN



LEAK  
PROOF



FREEZER  
SAFE

**Product Code : H 253**

# CLASSIC STAINLESS STEEL SHAKER



INCLUDES MIXER BALL  
FOR EASY BLENDING

EASY TO CARRY IN BACKPACK,  
CARRY BAG, GYM BAG



Capacity : 500 ml. approx.

FLIP TOP CAP WITH EASY CARRY SLOT

POWER **PLUS**

## INSULATED STRAIGHT STEEL BOTTLE

WITH PLASTIC OUTER BODY

- Stainless steel bottle with PU Insulated outer body
- Works like a flask, keeps your drink hot / cold for upto 4 hours
- Durable & Light Weight
- BPA Free, made from Stainless steel inside
- Makes the bottle stay fresh with no odors
- Slot for carrying easily
- Leakproof, Flip top cap to drink easily



KEEPS  
HOT/COLD  
FOR  
4-5 HOURS

Product Code  
H 224



LEAK  
PROOF



LIGHT  
WEIGHT



WIDE  
MOUTH



BPA  
FREE



Designed to fit easily in car cup holders



POWER PLUS

# CAFÉ MATE PRO

STAINLESS STEEL VACUUM COFFEE MUG  
WITH TEMPERATURE DISPLAY



HOT & COLD  
6-8 HOURS

PREMIUM FLIP TOP  
LOCKING CAP

DOUBLE WALL PROTECTS YOUR  
HANDS FROM BURNING BY  
HOT LIQUIDS INSIDE

COMES WITH A CAP  
TO STORE YOUR DRINK FOR LATER

DOUBLE WALL MUG MADE OF  
STAINLESS STEEL INSIDE



DOUBLE  
WALL



BPA  
FREE



LEAK  
PROOF

304 GRADE

**STAINLESS STEEL** inside

Capacity 510 ml. approx

Product Code : H 278

POWER **PLUS**

# CAFÉ MATE

## STAINLESS STEEL

### VACUUM COFFEE MUG

Double wall protects your hands from burning by hot liquids inside

Double wall mug made of stainless steel inside

Capacity 380 ml. approx

Product Code : H 276



Elegant design,  
made of  
**100%**  
stainless steel

Slim construction to  
fit inside car holders easily



**LEAK  
PROOF**



**BPA  
FREE**



**DOUBLE  
WALL**



**304  
STEEL**



**HOT & COLD  
6-8 HOURS**



PREMIUM FLIP TOP LOCKING CAP

**304 GRADE  
STAINLESS STEEL**

**POWER PLUS**

Capacity 510 ml. approx

**SILICON GRIP**

# CAFÉ BUDDY

## STAINLESS STEEL

### VACUUM COFFEE MUG

Elegant design,  
made of  
**100%**  
stainless steel

Double wall protects your  
hands from burning by hot liquids inside

Double wall mug made of  
stainless steel inside



**304 GRADE**  
**STAINLESS STEEL** inside

2  
DOUBLE  
WALL



**BPA  
FREE**



**LEAK  
PROOF**



**HOT & COLD  
6-8 HOURS**

Product Code  
H 274



# SUNSET+ MAGIC SUCTION STAINLESS STEEL INSIDE

Product Code : H 280

Capacity : 360 ml approx.

POWER+  
PLUS



BPA  
FREE



DOUBLE  
WALL



LEAK  
PROOF

- High quality stainless steel double wall mug
- Mirror finish stainless steel inside for longer life

COMES WITH A LID  
TO STORE YOUR  
DRINK FOR LATER

MAGIC SUCTION  
FEATURE ENSURES  
SPILL FREE DESIGN



MUG DOESN'T FALL OFF WITH  
ACCIDENTAL PUSHES, BUT CAN  
BE LIFTED EASILY STRAIGHT UP



# SUNSET MUG

## STAINLESS STEEL

WITH LID

Capacity 360 ml approx.



Product Code : H 279



POWER PLUS

- High quality stainless steel double wall mug
- Mirror finish stainless steel inside for longer life
- Double wall protects your hands from burning by hot liquids inside
- Comes with a lid to store your drink for later



BPA  
FREE



DOUBLE  
WALL



LEAK  
PROOF





Capacity 750ml Approx

## TRAVEL VACUUM FLASK WITH SILICON STRAP

- Double wall stainless steel vacuum insulation
- Rinse with hot/cold water before filling with hot/cold liquid for increased temperature retention



DOUBLE  
WALL



304  
STEEL



KEEPS HOT  
FOR  
6-7 HOURS



AMAZINGLY  
LIGHT WEIGHT



STAY FRESH  
NO ODOURS



SPILL &  
LEAK PROOF

Product Code : H 272

# PLUM 550

## *DOUBLE WALL*

## VACUUM MUG



ANTI RUST



DOUBLE WALL



BPA FREE



LEAK PROOF

Double wall protects  
your hands from burning  
by hot liquids inside

Mug's double wall also  
prevents cold liquids'  
temperature increase  
by body heat



Capacity  
**550 ml.** approx.

Product Code : H 271

**304 GRADE STAINLESS STEEL**

# PLUM 350 **DOUBLE WALL** VACUUM MUG



Capacity  
**350 ml.**  
approx.



Mug's double wall also prevents cold liquids' temperature increase by body heat

Double wall protects your hands from burning by hot liquids inside



KEEPS **HOT**  
FOR 4-5  
HOURS



Product Code : H 270

**304 GRADE**  
**STAINLESS STEEL**



ANTI  
RUST



DOUBLE  
WALL



LEAK  
PROOF



304  
STEEL



BPA  
FREE



# LONG COLA

## COLOR STAINLESS STEEL BOTTLE WITH COLOR CAP AND CARRY STRAP



CAPACITY 900mL APPROX.

**STAINLESS STEEL**



**LEAK  
PROOF**



**WIDE  
MOUTH**



**LIGHT  
WEIGHT**



**BPA  
FREE**

Product Code  
H 241 A

# *STRAIGHT* STEEL VACUUM FLASK

with Press Flow Lid



Capacity  
**500 ml.**  
approx.



- Vacuum flask with press lock cap
- Double wall stainless steel vacuum insulation with food grade 304 stainless steel inside
- Rinse with hot/cold water before filling with hot/cold liquids for increased temperature retention
- Matte black finish body looks premium



**LEAK  
PROOF**



**DOUBLE  
WALL**

Product Code : H 262

**POWER PLUS**



**Hot / Cold**

Press cap  
to pour,  
Press again  
to close



**304 GRADE  
STAINLESS STEEL**

POWER **PLUS**



**304 GRADE  
STAINLESS STEEL**

Capacity  
**400 ml.**  
approx.

# BAMBOO DOUBLE WALL STEEL MUG

Elegant design,  
made of  
**100%**  
stainless steel



Double wall protects  
your hands from burning  
by hot liquids inside



Leak proof cap  
with Sliding cover  
to store your  
drinks for later



**BAMBOO BASE** ADDS TO  
THE **MUG'S APPEAL**

Product Code : H 265



**304  
STEEL**



**DOUBLE  
WALL**



**BPA  
FREE**



**LEAK  
PROOF**



**ANTI  
RUST**



# DELTA

## STEEL VACUUM FLASK WITH FINGER SLOT

- Delta steel vacuum flask comes with finger slot
- Double wall stainless steel vacuum insulation
- Wide mouth helps add ice cube easily
- Rinse with hot/cold water before filling with hot/cold liquids for increased temperature retention
- Matte black finish body looks premium



**304  
STEEL**



**LEAK  
PROOF**



**DOUBLE  
WALL**



**12<sup>h</sup>  
Cold**



**8<sup>h</sup>  
Hot**

Capacity  
**600 ml.**  
approx.



Product Code : H 263



CAPACITY **1L**  
APPROX.



# FLORA

STEEL BOTTLE COLORED



**LEAK  
PROOF**



**LIGHT  
WEIGHT**



**WIDE  
MOUTH**



**BPA  
FREE**

packing  
in  
White  
Box



**STAINLESS STEEL**

Product Code : H - 282





# FLORA

## STEEL BOTTLE NATURAL



**LEAK  
PROOF**



**LIGHT  
WEIGHT**



**WIDE  
MOUTH**



**BPA  
FREE**

Product Code : H - 281

**STAINLESS STEEL**



packing  
in  
White  
Box



Capacity **750 ml.** approx.

POWER **PLUS**

# Square

## INSULATED STEEL BOTTLE

- Stainless Steel inside & food safe plastic outside
- Bottle has silicon strap to hold and carry easily
- Bottle Keeps liquid hot / cold for 4-6 hours



BOTTLE HAS  
SILICON STRAP  
TO HOLD  
AND CARRY EASILY



**STAINLESS STEEL** inside



**HOT & COLD**  
4-6 HOURS



**AMAZINGLY**  
**LIGHT WEIGHT**



**STAY FRESH**  
**NO ODOURS**



**SPILL &**  
**LEAK PROOF**

Product Code  
H 268

# FOGGY+

## STAINLESS STEEL

### COFFEE MUG WITH CARABINER HANDLE

Capacity **350 ml.** approx.

POWER **PLUS**



High quality  
stainless steel  
double wall mug

Mirror finish  
steel inside  
for longer life

Double wall protects  
your hands from  
burning by hot  
liquids inside

Double wall also  
prevents cold liquids'  
temperature increase  
by body heat



LEAK PROOF



DOUBLE WALL



Available in 3 Colors



Black



Yellow



Peach

Product Code : H 252



POWER **PLUS**

Capacity **350 ml.** approx.

Product Code : H 255

**STAINLESS STEEL** inside

# FLASH Stainless Steel INSULATED COFFEE MUG

Comes with a cap to store your drink for later

Double wall protects your hands from burning by hot liquids inside

High quality stainless steel double wall mug

Mirror finish steel inside for longer life



CLICK HERE



TO PLAY VIDEO



KEEPS  
HOT & COLD  
4-6 HOURS

Capacity 375 ml. approx.

# HEXA

## INSULATED

### TALL SIPPER MUG

POWER **PLUS**



ANTI  
RUST



DOUBLE  
WALL



LEAK  
PROOF

Mug's double wall also  
prevents cold liquids  
temperature increase  
by body heat



BPA  
FREE

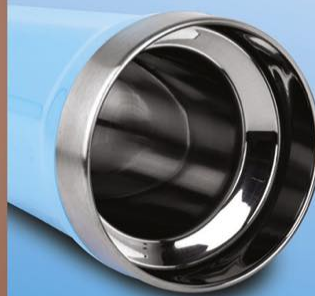


304  
STEEL

Double wall protects  
your hands from burning  
by hot liquids inside



Double wall mug made  
of 304 grade food-safe  
stainless steel inside



Comes with a  
cap to store your  
drink for later

Product Code : H 254

**304 GRADE  
STAINLESS STEEL** inside



# 1 L. FLASK WITH HANDLE

LID ACTS AS CUP | 360 DEGREE POURING SPOUT

CAPACITY  
**1L**  
APPROX.



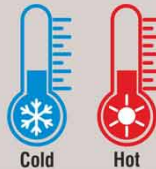
THE PERFECT SIZE  
EASY TO CARRY ANYWHERE YOU GO

SWEAT AND BURN FREE

THERMOS CAP

LEAK PROOF

VACUUM INSULATED



LEAK PROOF



BPA FREE LID



WIDE MOUTH

Product Code : H 259

# OMEGA VACUUM FLASK WITH PRESS LOCK CAP

**POWER PLUS**

- Double wall stainless steel vacuum insulation with food grade 304 stainless steel inside
- Rinse with hot/cold water before filling with hot/cold liquids for increased temperature retention
- Matte black finish body looks premium



Hot / Cold

**304 GRADE  
STAINLESS STEEL** inside



**304  
STEEL**



**LEAK  
PROOF**



**DOUBLE  
WALL**



Press cap to pour,  
press again to close

Capacity  
**700 ml.**  
approx.

Product Code : H 257



**POWER PLUS**

# PREMIA II GLASS MUG

WITH FULL SILICON SLEEVE & LID



Product Code : H 256

- Elegant glass mug with silicon sleeve
- Complete Silicon sleeve on body to protect your hands from burning from hot liquid inside
- Keeps the contents pure and free from contamination



LEAK PROOF



BPA FREE



NON TOXIC



SILICON LID

SEPARATE SLOT FOR USE WITH STRAW

Capacity: 350 ml approx.

Available in 3 Color



POWER **PLUS**

# LINCOLN *Lite*

2 TONE STAINLESS STEEL MUG

Product Code : H 249



**STAINLESS STEEL** inside



Capacity  
300 ml  
approx.



Comes with a  
cap to store your  
drink for later

Double wall  
protects your  
hands from  
burning by hot  
liquids inside



**DOUBLE  
WALL**



**BPA  
FREE**



**LEAK  
PROOF**



**ANTI  
RUST**



Elegant design,  
made of  
**100%**  
stainless steel inside



Enjoy your Coffee in the original Power Plus mug

# LINCOLN

## 2 TONE MAGIC

### SUCTION MUG

Capacity  
300 ml approx.



Product Code : H 251

Magic suction feature  
ensures spill free design



Mug doesn't fall off  
with accidental pushes,  
but can be lifted easily  
straight up with handle

Enjoy your Coffee in the original Power Plus suction mug



**STAINLESS STEEL**  
inside

Elegant design,  
made of 100%  
stainless steel inside

POWER **PLUS**



**DOUBLE  
WALL**



**BPA  
FREE**



**LEAK  
PROOF**



**ANTI  
RUST**



**MADE IN INDIA**

Capacity 750 ml. approx.

POWER **PLUS**

# *Candy* **INSULATED STEEL BOTTLE WITH FLIP TOP LID**

- Stainless Steel inside & food safe plastic outside
- Bottle has silicon strap to hold and carry easily
- Bottle Keeps liquid hot / cold for 4-6 hours



**BOTTLE HAS  
SILICON STRAP  
TO HOLD  
AND CARRY EASILY**

Product Code : H 248

**STAINLESS STEEL inside**



**HOT & COLD  
4-6 HOURS**



**AMAZINGLY  
LIGHT WEIGHT**



**STAY FRESH  
NO ODOURS**



**SPILL &  
LEAK PROOF**



Available in 4 Colors





# GRIPPER

## INSULATED STEEL BOTTLE

### WITH FLIP TOP LID



Capacity 750 ml. approx.



STRAP FOR CARRYING EASILY



- Stainless steel bottle with PU Insulated outer body
- Durable & Light Weight
- Made from high-quality Stainless steel
- Flip top lid for ease of drinking
- Electropolished inside to increase durability and to make the bottle bacteria resistant
- Makes the bottle stay fresh with no odors
- Sturdy construction



Electropolished inside to finish hiding spots of bacteria and viruses



Hot & Cold  
4-6 Hours



Spill &  
Leak Proof



STAINLESS STEEL inside

POWER PLUS



AMAZINGLY  
LIGHT WEIGHT



DURABLE  
CONSTRUCTION



STAY FRESH  
NO ODOURS



ERGONOMICAL DESIGN  
EASY TO CARRY

Product Code : H 243

# Sports Flask - H 130

with bubble grip



Silicon sleeve specially designed for better grip



Finger ring on the lid to carry easily



Special mechanism, no visible threads

## Features

- Fresh design that can be carried like a sipper
- Keeps beverages hot till 12 hours and cold up to 24 hours!
- Double insulated with vacuumization technology for superior temperature retention
- Made of high quality, food grade 18/8 stainless steel
- Silicon sleeve on the body for a better grip
- Designed to fit easily in car cup holders
- Capacity: 600 ml (approx)

*Best for Sports People*

Colors Available:

White

Pink

Black





# FLIPPY

Stainless Steel Bottle  
with Flip top colored Lid



**LEAK  
PROOF**



**LIGHT  
WEIGHT**



**BPA  
FREE**



**WIDE  
MOUTH**

CAPACITY  
**700ml**  
APPROX.

**STAINLESS STEEL**



Product Code : H - 242

**PERFECT FOR STUDENTS**

# STEEL BOTTLE WITH SILICON RING HANDLE

Capacity 1 Ltr. approx

CAPACITY  
**1L**  
APPROX.



**LEAK PROOF**



**LIGHT WEIGHT**



**BPA FREE LID**



**WIDE MOUTH**



**Product Code - H 239**





Capacity  
**500 ml.**  
approx.

**304 GRADE**  
**STAINLESS STEEL** inside

Product Code : H 184

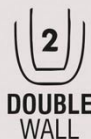
# SLIM COLA

## **STAINLESS STEEL**

### VACUUM FLASK

### WITH PU SLEEVE

- Beautiful flask made of high quality 304 grade Stainless steel
- Vacuumized and double walled for better temperature retention
- Keeps hot / cold for up to 6-12 hours!
- Slimmer version of Cola shape flask, also known as cola bottle
- Comes with a PU sleeve for carrying easily and enhancing beauty
- Beautiful design, easy on eyes



# FLASH

Stainless Steel  
**COFFEE MUG**



Product Code : H 235

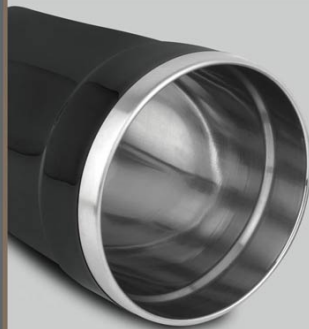


**KEEP YOUR  
HANDS SAFE**



**KEEP YOUR  
DRINK HOT**

Capacity  
**350 ml.** approx.



**POWER PLUS**



High quality stainless steel  
double wall mug

Mirror finish  
steel inside for longer life

Double wall protects your  
hands from burning by hot  
liquids inside

Comes with a cap to  
store your drink for later



**ANTI  
RUST**



**DOUBLE  
WALL**



**BPA  
FREE**



CLICK HERE



TO PLAY VIDEO



# HEXA

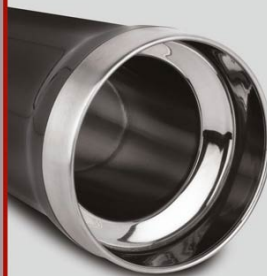
## TALL SIPPER MUG



Capacity  
**375 ml.**  
approx.

**304 GRADE**  
**STAINLESS STEEL** inside

**POWER PLUS**



Double wall mug made  
of 304 grade food-safe  
stainless steel inside

Comes with a cap to  
store your drink for  
later

Double wall protects  
your hands from burning  
by hot liquids inside

Mug's double wall also  
prevents cold liquids'  
temperature increase  
by body heat



**Product Code : H 234**



**ANTI  
RUST**



**BPA  
FREE**



**DOUBLE  
WALL**



**LEAK  
PROOF**



CLICK HERE



TO PLAY VIDEO

# SHINY

**SS COFFEE MUG WITH HANDLE**

**WITH HANDLE & INCLUDED CAP**



**STAINLESS STEEL** inside

Capacity  
**225 ml.**  
approx.



Product Code : H 237





# NOBLE

## STAINLESS STEEL

## COFFEE MUG

POWER **PLUS**



Product Code :  
H 229



CAPACITY  
460ML APPROX

- High quality stainless steel double wall mug
- Mirror finish stainless steel inside for longer life
- Double wall protects your hands from burning by hot liquids inside
- Mug's double wall also prevents cold liquids' temperature increase by body heat
- Comes with a cap to store your drink for later

**STAINLESS STEEL**  
inside



Available in 2 colors  
custom colors can be made on request



# OXFORD

STAINLESS STEEL

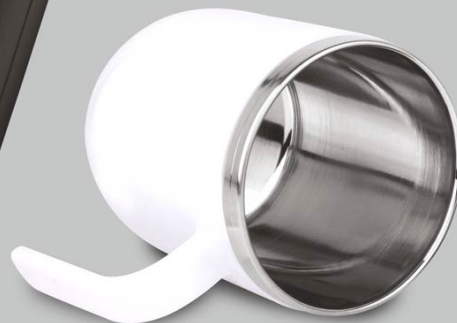
## COFFEE MUG

POWER **PLUS**

CAPACITY  
460ML APPROX



- Double wall protects your hands from burning by hot liquids inside
- Double wall mug made of stainless steel inside
- Comes with a cap to store your drink for later



**STAINLESS STEEL**  
inside



**BPA  
FREE**



**LEAK  
PROOF**



**ANTI  
RUST**



**DOUBLE  
WALL**

Product Code : H 228

Available in 2 colors  
custom colors can be made on request





**LEAK PROOF**



**LIGHT WEIGHT**



**BPA FREE LID**



**WIDE MOUTH**

# **CURVY STEEL BOTTLE COLORED**

**Capacity 750ml. approx**

**CAPACITY**  
**750ml**  
**APPROX.**

packing  
in  
White  
Box

**Product Code - H 233**



Product Code - H 232

# CURVY STEEL BOTTLE NATURAL

Capacity 750ml. approx

CAPACITY  
**750ml**  
APPROX.



LEAK PROOF



LIGHT WEIGHT



BPA FREE LID



WIDE MOUTH



packing  
in  
White  
Box





**Product Code**  
**H 231**

## **CURVY STEEL** **BOTTLE COLORED** Capacity 1 L. approx



**LEAK PROOF**



**LIGHT WEIGHT**



**BPA FREE LID**



**WIDE MOUTH**

**CAPACITY**  
**1L**  
**APPROX.**



packing  
in  
White  
Box



Product Code - H 230



# CURVY STEEL BOTTLE NATURAL

Capacity 1 L. approx



LEAK PROOF



LIGHT WEIGHT



BPA FREE LID



WIDE MOUTH

CAPACITY **1L**  
APPROX.



packing  
in  
White  
Box

# OSCAR

## STAINLESS STEEL COFFEE MUG WITH HANDLE

Product Code : H 227

**POWER PLUS**



LEAK PROOF



DOUBLE WALL



High quality stainless steel  
double wall mug

Mirror finish steel inside  
for longer life

Store your drink for later with  
flip top drinking vent protector

Capacity **350 ml.**  
approx.



Other color options



# FOGGY

## STAINLESS STEEL COFFEE MUG

POWER **PLUS**

High quality stainless steel  
double wall mug

Mirror finish steel inside  
for longer life

Store your drink for later with  
flip top drinking vent protector



Capacity **350 ml.**  
approx.



Product Code : H 226

Other color options



# TALL SIPPER MUG



**304 GRADE  
STAINLESS STEEL** inside

Product Code : H 223



Double wall mug made  
of 304 grade food-safe  
stainless steel inside



Capacity 375 ml. approx.



Double wall protects  
your hands from burning  
by hot liquids inside

Mug's double wall also  
prevents cold liquids'  
temperature increase by  
body heat

Comes with a cap  
to store your drink  
for later with flip-top  
drinking vent protector



[CLICK HERE](#)



TO PLAY VIDEO

# ROYAL

**Stainless Steel** Vacuum Mug - H 207



- Exclusive Stainless Steel finish
- The Air-tight lid prevents spillage
- Beautifully designed handle for an easy grip
- Leak proof
- Double Walled
- Vacuumized
- Keeps the beverage warm for 4 to 6 hrs.
- Made from high quality materials

**POWER PLUS**



Inside



Leakproof



Easy Grip



Double Wall



POWER **PLUS**



Capacity **500 ml.** approx.

# BAMBOO COLA VACUUM FLASK

- Double wall insulated Vacuum bottle made of 304 grade stainless steel inside and outside
- Retains temperature for 12-24 hours
- Leakproof lid
- Natural bamboo on the body adds to the product appeal



DOUBLE WALL



LEAK PROOF



24<sup>h</sup>  
Cold



12<sup>h</sup>  
Hot



INSULATED  
BOTTLE



MADE OF **304 GRADE STEEL & BAMBOO**

Product code : H 199

# COLA METAL **WATER BOTTLE** WITH STEEL CAP

Product Code : H 198



STORES ABOUT  
**600 ML** LIQUID

ENGRAVING COLOUR **SILVER**



**GREAT FOR  
PROMOTIONS!**

**STEEL FINISH CAP  
FOR PREMIUM LOOK**

AVAILABLE IN  
**3 COLOURS**



packing  
in  
White  
Box



# FLIP TOP METAL WATER BOTTLE

Product code : H 193



ENGRAVING COLOUR **SILVER**



**GREAT FOR  
PROMOTIONS!**

**FLIP TOP CAP  
WITH  
CARRY HANDLE**



Capacity  
**600 ml.**  
approx.



packing  
in  
White  
Box

AVAILABLE IN  
**3 COLOURS**



# METAL WATER BOTTLE WITH SILICON CARRY STRAP

Product code : H 192



STORES ABOUT  
600 ML LIQUID



COLORED  
PLASTIC CAP  
WITH SILICON STRAP



GREAT FOR  
PROMOTIONS!



packing  
in  
White  
Box

ENGRAVING COLOUR **SILVER**

CAP AVAILABLE IN 4 COLOURS





## Prism Steel Bottle Colored - H 205

Capacity 1L approx



**LEAK PROOF**



**LIGHT WEIGHT**



**BPA FREE LID**



**WIDE MOUTH**

**CAPACITY**  
**1L**  
APPROX.

Available 2 colors

-  Copper
-  Wine Red



Cap A



Cap B



**Custom color can be made on request**





**Straight Steel Bottle Colored**  
**Capacity 750ml. approx**



**LEAK PROOF**



**WIDE MOUTH**



**LIGHT WEIGHT**



**BPA FREE LID**

**CAPACITY**  
**750ml**  
**APPROX.**



Cap A



Cap B



Available 4 colors



**Custom color can be made on request**

**Product Code - H 203**





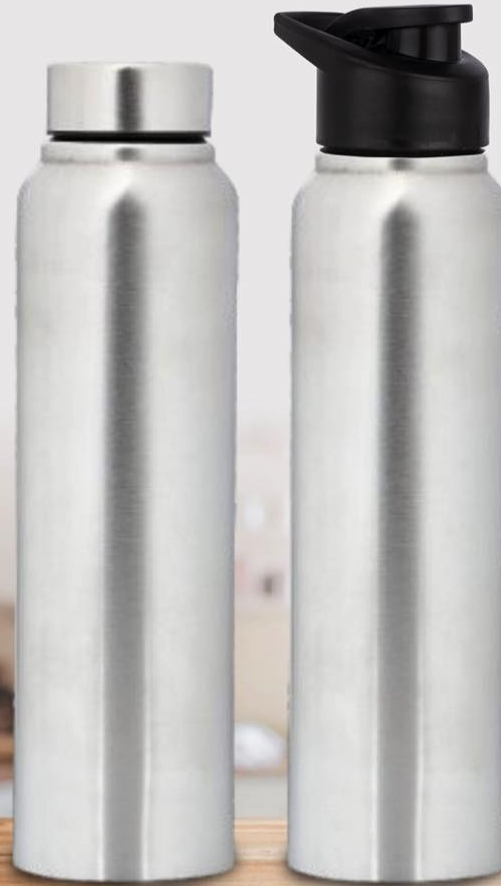
STAINLESS  
STEEL

packing  
in  
White  
Box

## Straight Steel Bottle Natural - H 202

Capacity 750ml. approx

CAPACITY  
**750ml**  
APPROX.



Cap A

Cap B



LEAK PROOF



WIDE MOUTH



LIGHT WEIGHT



BPA FREE LID

Available  
Silver Color





Cap B



Cap A



Available 3 colors



-  LEAK PROOF
-  WIDE MOUTH
-  LIGHT WEIGHT
-  BPA FREE LID

**Straight steel bottle Colored**  
**Capacity 1L approx**

CAPACITY **1L**  
APPROX.

**Product Code**  
**H 201**



packing  
in  
White  
Box



Cap A



Cap B

**Custom color can be made on request**

# Zen

## Stainless steel Bamboo Vacuum Flask - H 191 with Tea Strainer

**POWER PLUS**

- Super premium flask with a mix of steel and bamboo
- 304 grade steel used inside with natural bamboo outside
- Fully Vacuumized, retains temperature for 12-24 hours!
- Natural bamboo on the body and lid gives a very elegant look
- Tea strainer allows for both hot and cold detox tea brews
- Rust free, BPA free, leakproof construction

Capacity: 500 ml (approx)



BPA Free



Leakproof



24<sup>h</sup>  
Cold



12-24<sup>h</sup>  
Hot



Inside





CAPACITY **1L**  
APPROX.



## Prism steel bottle Natural - H 204

Capacity 1L approx



**LEAK PROOF**



**LIGHT WEIGHT**



**BPA FREE LID**



**WIDE MOUTH**

packing  
in  
White  
Box



Cap A

Cap B





# Straight Steel Bottle Natural - H 200

Capacity 1L approx



# Eco Mug

Eco Friendly Coffee Mug with Steel Inside - H 187

WE'VE GONE  
**GREEN** | **BY USING  
ECOCUPS**

Made of Eco friendly wheat fiber



Capacity : 225 ml (approx.)



White Gift Box

- Sustainable and responsible choice as lesser plastic gets dumped in landfills
- Has a fitting cover with silicon ring around
- Outer body made of responsibly sourced wheat fiber
- BPA free, food safe material used

Eco Friendly  
Coffee Mug  
with Steel Inside



CLICK HERE



TO PLAY VIDEO



Capacity : 750ml Approx.

# Pride

Stainless Steel Vacuum Flask - H 181

**POWER PLUS**

- High quality flask made of high quality 304 grade stainless steel
- 304 steel used both inside and outside the flask
- Slim construction to fit inside car holders easily
- Fully Vacuumized, retains temperature for 18-24 hours!
- Silicon cover on the lid for ease and comfort of use
- Capacity: 750 ml (approx)

Silicon cover on the lid for ease and comfort of use



Hot / Cold



Inside / Outside

Slim construction to fit inside car holder easily





Capacity : 750ml (approx)

## Pearl Double Cap Vacuum Bottle - H 165 with carry loop (750 ml approx)

- Fresh design stainless steel bottle in metallic finish
- Made of 304 grade food-safe stainless steel inside
- Keeps your beverage hot/cold for more than 6 hours
- Double cap design : Small cap to drink and pour, and wide mouth cap to fit ice cubes and fill the bottle easily
- Bigger lid also acts as an emergency cup while travelling

Made of 304 grade food-safe stainless steel inside



Double Cap Design





# ULTIMA

## Premium Revolving Kettle - H 164

In 304 Stainless Steel

POWER **PLUS** <sup>®</sup>

- Double wall vacuum technology for maximum temperature retention.
- Keeps your beverage hot or cold for upto 12 hours. (depending on usage)



Capacity  
**2L**



Single hand operation.  
Easy push button



Easy pull up/ push down cap  
locks easily and save time



Rotation function on  
bottom for more seamless use



Foodsafe 304 stainless  
steel used inside/outside

# Wilson

Stainless Steel Flask with Carry Handle - H 161

- Keeps your beverage hot for upto 8 hours and cold upto 12 hours
- Rinse with hot/cold water before filling with hot/cold liquids for increased temperature retention
- Matte black finish body looks premium

Vacuum flask with steel cap and movable handle for carrying comfortably

Capacity: 500ml (approx)

Double wall stainless steel vacuum insulation with food grade 304 stainless steel inside

Removable middle cap for better cleaning and widen mouth



# Mighty

Stainless Steel Magic Coffee Mug  
with silicon strap - H 139

POWER **PLUS** <sup>®</sup>

Made of food-safe  
304 stainless steel inside



Easy lift up cap to protect  
the drinking vent



Mug doesn't fall off with  
accidental pushes, but can be  
lifted easily straight up



350 ml.

- Magic suction feature ensures spill free design.
- Premium silicon strap to hold the mug and wrap around hand easily.

Available in 3 colors



**SPILL FREE DESIGN**



CLICK HERE

TO PLAY VIDEO



# Lustre

## Stainless Steel Double Wall Mug - H 137

- Double wall mug made of 304 grade food-safe stainless steel inside
- Double wall protects your hands from burning by hot liquids inside
- Mug's double wall also prevents cold liquids' temperature increase by body heat
- Comes with a cap to store your drink for later with slider drinking vent protector
- Capacity: Approx 425 ml







## **Colorful Coffee mug - H 127** **(with Stainless Steel inside)**

**Available in 5 beautiful colors** (others available on request)



**Blue**



**Black**



**Amber**  
**(Orange-Yellow)**



**Magenta**



**Ivory**

# Easy Pour Flask - H 110

**POWER PLUS<sup>®</sup>**

**Easy Push Button**



## Features:

- Double wall stainless steel vacuum insulation technology for maximum temperature retention.
- Keeps your beverage hot or cold for upto 24 hours.
- Strong handle can easily hold the weight of whole pot of water.
- One touch stopper with soft silicone cover, easy for use.
- Galvanised press button with top notch finish.
- Food grade stainless steel cover on lid. Your beverage only comes in contact with stainless steel.



**Double wall  
stainless steel  
vacuum insulation**

Available in 2 colors : Black and White



# Vacuumized Stainless Steel Sipper - H98

in Honeycomb Design

(with tea/ fruit infuser pocket)



Removable infuser pocket made of durable Eastman TRITAN™ can be used to make Green / Herbal Tea and infused, fruit flavoured water



- Double wall SS Vacuum insulation technology for maximum temperature retention
- Keeps your beverage hot or cold for more than 24 hours!
- Rubber bottom for better grip on smooth surfaces
- Premium honeycomb design in brushed steel finish adds to the luxurious feel
- Separate space for branding
- Capacity: 550ml.



Available in 2 colors:

Metallic Gray



Champagne



Branding space



[CLICK HERE](#)

Spill proof sipper  
controls the flow  
making it excellent for travelling



TO PLAY VIDEO



POWER PLUS<sup>TM</sup>

Double Walled  
Crystal  
**SIPPER**  
H44

AVAILABLE IN TWO COLORS



**vaccumized**  
beverage carrier

Capacity  
**350ml** (approx.)



**LUXURIOUS LOOK**

Beautiful crystal finish on the lid brings in a luxurious feel.

**COMPACT SIZE**

Its small size makes it easy to carry even in a small bag.

This beautiful sipper is a great travel companion due to its **compact size**, attractive finish and has the ability to retain the temperature of **Hot or Cold beverages** for **more than 24 hrs**





Capacity 420 ml (approx.)

## FLASK FEATURES

Vacuumized

Double walled

Leak Proof

Exclusive Stainless Steel finish

The Air-tight lid prevents spillage



Keeps the Beverage warm  
for **4 to 6 hrs**

Beautifully designed handle for an easy grip.

The vacuumized lid design perfectly combines  
form & function



# Cola Premium Vacuum Flask



- This premium flask is made of high quality 304 grade stainless steel
- Fully insulated, double walled & Vacuumized for better temperature retention
- Retains temperature for upto 16 hours!
- Cola flask, also known as cola bottle is a stylish way to carry your beverages
- Has a silicon ring around the cap for comfortable grip
- Comes with a storage pouch for carrying easily
- Beautiful design, easy on eyes
- Capacity: 750 ml (approx)



Available in 2 colors:  
Wine Red & Metallic Gray



Storage pouch  
for carrying easily

# Car Heater Mug - H97

with car / USB charger



- Be it home, office or car, this mug allows you to keep your beverage hot for long periods of time every where.
- Has a 12v socket which can be plugged into the car's socket.
- Socket converts into a USB plug, making it suitable for use with computers, power banks, or electricity.
- When plugged through USB port, the mug can keep your hot beverages hot; but when used in car, it is powerful enough to even make your cold beverage hot!
- Double wall for convenient holding



Wire can be separated to use as a regular mug



Now take your tea / coffee with you and keep it hot!



Detachable socket for use in car or with USB



Half turn mechanism for pouring prevents spilling during journeys



**POWER PLUS** <sup>TM</sup>

Vacuumized  
**TRAVEL FLASK**  
Double Walled

H 43

### FLASK FEATURES

Vacuumized

Cover acts as a travel cup

Capacity 500ml (approx.)

Ability to retain beverage temperature  
for more than 12 - 16 hrs

**TRAVEL**  
Companion

Available in 2 Colors